



# PALENCIA



## COMMUNITY COMPASS

December 2025 Edition

*Discover Palencia ~ Your Map to Community Living and Exploration*





# AMENITY HOURS

[Click Here for the Palencia Online Calendar](#)



## MC Amenity Center and Pools

### **Center**

9:00 AM - 8:00 PM

### **Pools**

9:00 AM - 8:00 PM

**\*Family Pool closed for resurfacing\***

### **Slide**

Closed for the Season

### **Cafe**

Closed for the Season

### **Holiday Hours:**

Wed Dec. 24th: 9am-12pm/ Thurs Dec. 25th: Closed

Wed Dec. 31st: 9am-12pm/ Thurs Jan. 1st: Closed

## Palencia Tennis

### **Courts Available**

7:00am - 10:00 PM daily

### **Tennis Shop Hours of Operation**

Monday-Friday 8:00 AM - 7:00 PM

Saturday & Sunday 8:00 AM - 4:00 PM

### **Pro Shop Holiday Hours:**

Wed Dec. 24th: 8am-12pm/ Thurs Dec. 25th: Closed

Wed Dec. 31st: 8am-12pm/ Thurs Jan. 1st: Closed



## Sweetwater Swim & Fitness Center

### **Center:**

Monday- Thursday: 5:00 AM- 9:00 PM

Friday: 5:00 AM- 8:00 PM

Saturday and Sunday: 8:00 AM- 7:00 PM

### **Lap Pool:**

Same as Fitness Center.

**\*Varying hours in Winter Season\***



# IMPORTANT!!!

## Family Pool Closed Starting Dec 1st



### Amenity Center: Family Pool Refurbishment!

We're excited to share that the Family Pool will be getting a full resurfacing and re-tiling this winter. Work begins December 1, and the pool (including the splash pad) will be closed for approximately 8–12 weeks for safety and construction access.

During this time, the Adult Pool will be open to all ages so families can continue enjoying the pool through the winter.

We scheduled this work for the off-season to minimize disruption, and we look forward to unveiling a refreshed Family Pool in the spring.

Thank you for your patience while we complete these improvements.

Thank you for your patience as we make these improvements for the community.



# CARS NEEDED!



## *Beep Beep!*

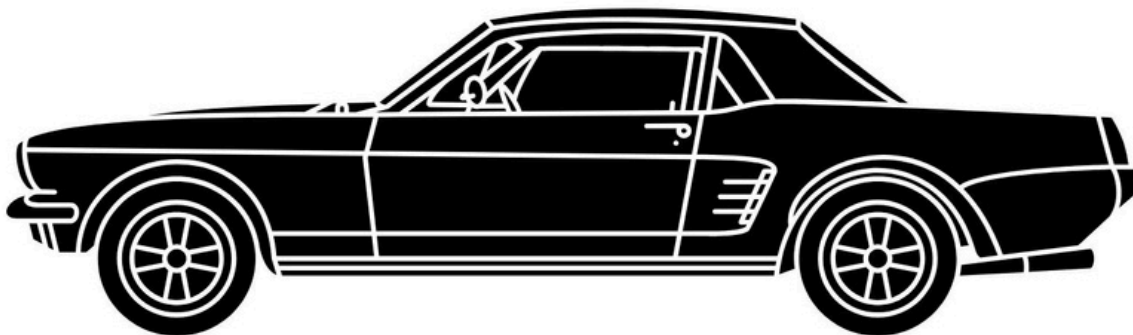
**\*\*\*WANTED\*\*\*  
CLASSY CARS**

**1.31.26** | **11-2pm**

**Register your car to be in  
the car show!!!**

**Email**

**[hila.stalcup@marshallcreekcdd.com](mailto:hila.stalcup@marshallcreekcdd.com)**





# FITNESS CENTER

## DECEMBER 2025

SUNDAY	MONDAY	TUESDAY	WEDNESDAY	THURSDAY	FRIDAY	SATURDAY
	1	2 <b>SW CDD Meeting</b> 4pm Fitness Center	3  No League play this week	4	5 <b>Festive Friday</b>	6
7	8	9	10 Last day of Pickleball League Play	11	12 <b>Festive Friday</b>	13
14	15	16	17	18	19 <b>Festive Friday</b>	20
21	22	23	24 Gym Hours 5am-3pm	25 Gym Hours Closed all Day	26 <b>Festive Friday</b> Gym Hours 8am-8pm	27
28	29	30	31 Gym Hours 5am-5pm	2026 Gym Hours 8am-9pm		

Monday	Tuesday	Wednesday	Thursday	Friday	Saturday	Sunday
6:00am HIIT H		6:00am HIIT H				
	8:30am Cardio XTraining M/H	8:45am Spin M/H	8:30am Cardio XTraining M/H			
9:00am Pilates M				9:00am Gentle Yoga E	9:00am Zumba E/M	
10:15am Spin M/H	10:00am Cardio/Core E/M	10:30am Meditation E	10:00am Strong AllOver E			
11:10am Senior Stretch E	11:00am Senior MatPilates E	11:00am Yoga E	11:00am Senior MatPilates E			4:00pm Yoga E/M
	12:30pm Tai Chi Beginners		12:30pm Tai Chi Advanced	12:00pm Senior Stretch E	<b>Fitness Center:</b> <b>(904) 829-8584</b> <b>Amenity Center:</b> <b>(904) 810-0520</b> E=Easy M= Medium H=Hard 12/1/2025	
	5:15pm Yogalates M	5:15pm Power Yoga M/H				
6:00pm Pilates Barre M/H	6:30pm Power Pump M/H	6:30pm Zumba E/M				

## FITNESS SCHEDULE





# FITNESS CENTER



## **Festive Friday @ the Gym** **Wear Your Favorite "Drip"**

**Week #one**

**Fun Socks**

**Week #two**

**Fun Headgear**

**Week #three**

**Red or Green Attire**

**Week #four**

**College/NFL Gear**



# FITNESS CENTER



The Zen Room now has mirrors! Please enjoy this space for stretching, meditation, or individual workouts.

## New at the Fitness Center



The Bocce Ball Courts are now open. Please register for each alley on Court Reserve. We ask that you bring your own bocce set with you. Rakes are provided for keeping the sand nice after each reservation. To Use the alley's, please check in at the front desk with your member card.



# TENNIS CENTER



## DECEMBER NEWSLETTER

### December Clinics:

#### Adults

Our clinics will be on a normal schedule from

**Adults:** Dec. 1st-Dec. 19th

Drill Clinics and Friday Beg clinics will be held 12/26 and 1/2

Regular clinics for adults will resume on January 5th

#### Holiday and Tournament Closures:

Courts will be partially closed on Saturday, December 20th due to a mens tennis round robin.

**The Tennis Office will be closed**  
Noon on Dec. 24<sup>th</sup> through

Dec. 25<sup>th</sup>. Office will re-open Dec. 26<sup>th</sup> at 8:00 a.m.

Noon on Dec. 31<sup>st</sup> through

Jan. 1<sup>st</sup>. Office will re-open Jan. 2<sup>nd</sup> at 8:00 a.m.

Courts will be on a First Come/First Serve basis with no lights available during the closures.



Lost and Found is full! Please stop in if you are missing anything!



**DECEMBER SALES on**  
lesson packages, racquets,  
unlimited ball machine, Palencia  
logo wear + more!



#### Youth:

Our clinics will be on a normal schedule from

Dec. 1st-Dec. 18th

Regular clinics for youth will resume on January 5<sup>th</sup>

#### Youth Holiday Tournament:

Two day tournament – Doubles on  
12/22 and Singles on 12/23.

9:00-11:00 a.m.

Cost is \$15/day or \$25/both days

Sign up in the Tennis Office!



#### MENS SCURVY DOG 14<sup>TH</sup> ANNUAL ROUND ROBIN

Saturday, Dec. 20th from 10:00 am  
to 12:00 pm

All levels of play!

\$50/pp

Sign up by texting Chip Jeter at  
9047031555

Space is limited to 32 players so sign  
up ASAP!

Always a fun event!



3rd Annual Ugly Sweater Day at the  
Tennis Center!

Monday, December 15<sup>th</sup> from 8:00  
a.m. to 1:00 p.m.

Join us for some hot cocoa and  
yummy treats in celebration of the  
season!

Wear your ugliest holiday sweater  
and take some pick with your friends,  
teammates and coaches!



The Tennis Center and the B team want  
to thank you all for your generous  
donations of both food and gift cards to  
benefit the St. Johns Ecumenical Food  
Bank and the Port in the Storm  
Homeless Youth Center, respectively.

Palencia Tennis Center  
904-825-4012

[palenciatennis@marshallcreekcdd.com](mailto:palenciatennis@marshallcreekcdd.com)

Tom Salmon-Director of Tennis

[tom.salmon@marshallcreekcdd.com](mailto:tom.salmon@marshallcreekcdd.com)

Galina Boles- Head Pro

[galina.boles@marshallcreekcdd.com](mailto:galina.boles@marshallcreekcdd.com)

Jana McDonald-Tennis Pro

[janatennispro@gmail.com](mailto:janatennispro@gmail.com)

Myron Grunberg -Tennis Pro

[Myron49@aol.com](mailto:Myron49@aol.com)



# TENNIS CENTER



## TENNIS YOUTH TOURNAMENT



**MON 12/22 | TUES 12/23**

**9:00-11:00AM**

**\$15/DAY | \$25/BOTH DAYS**



**Monday**

Doubles Tournament w/ Pizza

**Tuesday**

Singles Tournament w/ Bagels



Register in person at the Tennis Center or  
Email [palenciatennis@marshallcreekcdd.com](mailto:palenciatennis@marshallcreekcdd.com)



# TENNIS CENTER

## 25% OFF MERCHANDISE (IN STOCK)

- Adult Rackets
- Youth Rackets
- Shoes
- Sunglasses
- Clothing (shirts, hats, visors, socks)



## 20% OFF SERVICES

- Private Lesson-  
Package of 4 (limit  
of 1 package/  
family)
- Yearly Ball  
Machine Rental



# TENNIS SHOP HOLIDAY SALE

DECEMBER 1ST - 31ST

## ADDITIONAL OFFER

- Buy 2 Friday Drill  
Clinics, Get the 3<sup>rd</sup>  
Free! (limit of 1  
certificate/  
person)





# TENNIS CENTER



## BEGINNER TENNIS

---

### FOR ADULTS

**Always wanted to  
learn to play tennis?  
Here's your chance!**

**Day:**

- Every Friday

**Time:**

- 11am-12pm

**Cost:**

- \$18/clinic

**Register In Advance**

**Call:** Tennis Center: 904-825-4012

**Email:** Tennis Center:  
palenciatennis@marshallcreekcdd.com





# AMENITY CENTER

December 2025

PALENCIA  
A Story of Discovery, Exploration, and Settlement

Sun

Mon

Tue

Wed

Thu

Fri

Sat



## \*Reminder\*

Effective August 1, 2025, the Amenity Center will no longer accept cash payments.

All payments must be made by debit/credit card or by check payable to Marshall Creek CDD.

Thank you for your understanding and cooperation.

## \*Notice\*

We will be conducting a community-wide audit starting in January 2026. As part of this process, all residents will be required to submit new Amenity Access Applications. More information coming soon.

## \*Cafe/Slide\*



### Hook & Iron Cafe

Closed for the Season



### Slide

Closed for the season



# AMENITY CENTER: EVENTS

## Movie Night

Friday, December 5th

6pm

Palencia Presents

**MARKET STREET**

*Movie Nights*

TICKET

Friday, Dec. 5th  
Showtime 6:00 pm



~Get ready for laughs, mischief, and holiday fun with the beloved family classic "Home Alone!"

~Bring your own picnic blankets and bug spray and enjoy the festivities on the lawn by the Amenity Center.

~Complimentary Popcorn & Cotton Candy from 5:30-6:30

~"The Little Pizza Truck" from 5:30-7pm



## Chick-Fil-A

Second Tuesday of the  
Month

December 9th

4:30-7:30pm or until sell  
out

## Inspired @ Palencia

December 9th

6pm

*'Tis the Season*

**Rustic Holiday Tree**

**Craft Social**

**Tues, Dec 9th**  
**6-7:30pm**

**Palencia Amenity Center**

**\*FREE\***  
for Palencia Residents!  
*Space Limited*

\$30 guest fee  
\$25 no-show fee



Create a 12" light-up holiday tree with a variety of decorative accents to celebrate the season in your own unique way!

Sign up at [InspiredSJC@gmail.com](mailto:InspiredSJC@gmail.com)



# AMENITY CENTER: FITNESS

## Fitness Class Schedule

### **Les Mills BODYCOMBAT**

Mondays at 9:00am with Heather S.

### **Les Mills BODYPUMP**

Wed/Friday at 10am with Crispin

Tues/Thurs at 9:30am with Miranda

**\*BodyPump is an intense muscular workout that requires adequate recovery time for safety and effectiveness. Residents MAY NOT RSVP for the class on two consecutive days.\***

### **Les Mills Dance**

Tuesdays at 10:30am with Miranda

Saturdays at 9:15am with Miranda

### **Les Mills BODYBALANCE**

Thursdays at 10:30am with Miranda

### **CARDIO STEP**

Wednesdays & Fridays

at 8:45am with Crispin

## Aqua Fitness Schedule

- Aqua Aerobics season has ended until Spring 2026

	Monday	Tuesday	Wednesday	Thursday	Friday	Saturday	Sunday
<b>Fitness Classes</b>							
			8:45am Cardio Step		8:45am Cardio Step		
9:00am Body Combat		9:30am Body Pump		9:30am Body Pump		9:15am Dance	
10:15am Virtual Body Pump		10:30am Dance	10:00am Body Pump	10:30am Body Balance	10:00am Body Pump	10:00am Aerobics Room Reserved	
<b>Dance/Cheer</b>							
5-5:45pm 4 yr olds Ballet/ Tumb.		4:15-5pm 3 yr olds Ballet/Jazz	4:15-5pm 5-6 yr olds Ballet/Jazz/Tumb.		4:30-5:15pm 5 and up Cheerstars!		
		5-6:15pm 7-9 yr old Ballet/Jazz					

## DECEMBER AMENITY CENTER CLASSES



# AMENITY CENTER: CLUBS



**Mah Jongg**  
**Monday's at 1pm**



**Men's Bible Study**  
**Monday's (Except last Monday)**  
**7pm**



**Ladies Canasta Club**  
**Tuesday's**  
**10am**



**Vintage Ladies Book Bunch**  
**Third Tuesday**  
**4pm**



**Farkle**  
**Thursday's**  
**12:30pm**



# COMMUNITY TREE TRIMMING



## TREE TRIMMING

**JAN 2026**

*The CDD would like to inform residents that **Lucas Tree Services** has been approved to trim the street live oaks.*

*This will be taking place in **January 2026**.*





# *New Feature*

## BREAKING NEWS

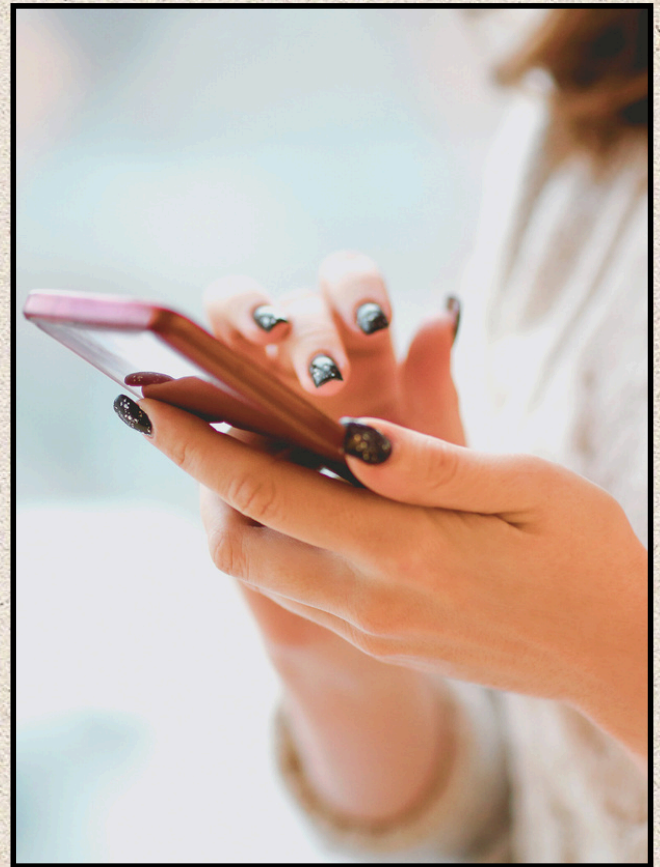
### Introducing text/SMS message notifications for PalenciaOnline.

We're excited to announce a new way to stay connected with CDD news and updates! PalenciaOnline is introducing a text/SMS notification service to ensure you receive timely information straight to your mobile devices.

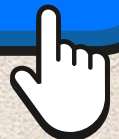
By subscribing to our text notifications, you'll get:

- Instant Alerts: Receive urgent updates and reminders directly.
- Community News: Stay informed about events, maintenance schedules, and more.
- Important Announcements: Meeting reminders, facility schedule information, etc.

To join, click here from your mobile phone or other device. Standard messaging rates apply.



**REGISTER HERE**



Your privacy is important to us. You can unsubscribe at any time by responding to any Palencia text with the word "Stop". We value your participation and look forward to keeping you informed through this convenient new communication tool.

Thank you for being part of our Palencia community!



## Important Reminders/ FAQ

### Golf Cart Reminders

#### Golf Cart Safety Reminder

We'd like to remind all golf cart drivers to please use only the designated paths and approved areas when driving around the community. Staying on the correct routes helps keep everyone safe and ensures our shared spaces remain enjoyable for all residents.


Thank you for your cooperation!


### Parking Reminders


Just a quick reminder from your Palencia team:


**Please do not park vehicles—partially or fully—on common area grass.**

Why this matters:

 Parking on the grass damages our landscaping.

 Tires can break or crush irrigation lines, causing leaks.

 Repairs are costly and ultimately affect all of us as a community.

 Keeping vehicles off the grass helps protect our shared spaces, keeps the community looking its best, and saves unnecessary expenses for everyone.

Thank you for doing your part to help keep Palencia beautiful!

### Drainage Reminders

The **Marshall Creek Community Development District (CDD)** is responsible for maintaining certain permitted drainage facilities and systems within Palencia. These facilities are tied to permits issued by state and local regulatory agencies, and the District ensures they remain in compliance.

However, the CDD does **not** have regulatory or enforcement authority over:

- Drainage disputes between neighbors
- Drainage issues between homeowners and private commercial properties (such as the golf course)
- General private property drainage matters

In those cases, the CDD has no legal role unless the issue directly impacts the District's permitted drainage systems or facilities.

We hope this helps provide clarity on what the CDD can and cannot address when it comes to drainage concerns. If you are unsure whether a drainage matter falls under the District's responsibility, please don't hesitate to reach out to our office—we're happy to guide you in the right direction.



# PALENCIA

## Public Entities

### Community Development Districts

**Created under Chapter 190 of the Florida Statutes  
Governed by a Board of Supervisors**

**Responsibilities** include overseeing the creation, funding, and ongoing maintenance of community infrastructure, including:

- Common grounds and landscaping
- Ponds, lakes, and stormwater management systems
- Amenity centers and recreational facilities
- Gate systems at North & South Loop and Las Calinas (maintenance, access codes, keys, etc.)
- Community streets and roadways
- Entryways and perimeter walls
- Elevated boardwalks

### How are fees paid?

Owners are billed for this through their annual property tax statement as a non-ad valorem assessment. Assessments consist of a bond portion which may be paid off and a maintenance portion which will always exist.

### Who to call?

**Click the link below—or copy it into your browser**  
—to identify the CDD responsible for your lot.  
**<https://www.palenciaonline.com/addresses/>**

#### **District Management**

**(District Information, Records, Bonds, Estoppels)**

#### **MCCDD**

**(321) 263-0132**

**[www.marshallcreekcdd.com](http://www.marshallcreekcdd.com)**

#### **SWCDD**

**(321) 263-0321**

**[sweetwatercreekcdd.com](http://sweetwatercreekcdd.com)**

**Onsite Management & Palencia Amenity Center**  
**(904) 810-0520**  
**625 Palencia Club Drive**

**Onsite Management & Palencia Fitness Center**  
**(904) 829-8488**  
**1865 North Loop Pkwy**

**[www.palenciaonline.com](http://www.palenciaonline.com)**

## Private Entities

### Property/ Home/ Condominium Owners Associations

**Not-for-profit Corporation created under  
Chapters 617 and 720 (POA/HOA) and Chapter  
718 (Condo) of the Florida Statutes  
Governed by a Board of Directors**

**Responsibilities** include the enforcement and implementation of the Association's governing documents, specifically as they relate to individual lots:

- Covenant restriction enforcement
- Architectural review and control
- Common areas owned by the Association
- Building elements for multi family units including: roofs, parking garages, common walls, etc.
- Gate systems for individual neighborhoods including: Avila & Augustine Island

### How are fees paid?

Owners receive assessment coupons or statements from the Association for their Dues, which can be annually, quarterly, or monthly. See your specific association for details.

### Who to call?

Palencia consists of several Associations.  
**Click the link below—or copy it into your browser**—to identify your specific POA and access the correct contact information.

**<https://www.palenciaonline.com/addresses/>**



# PALENCIA

## Onsite CDD Management Contacts

### **MCCDD**

#### **General Manager**

Jodi Moore

jmoore@vestapropertyservices.com

#### **Assistant General Manager**

Denise Powers

dpowers@vestapropertyservices.com

### **SWCDD**

#### **General Manager**

Erin Gunia

egunia@vestapropertyservices.com

#### **Fitness Center Manager**

Cheryl Blythe

cblythe@vestapropertyservices.com

Please call (904) 810-0520 for a new resident appointment.

## CDD Information

### **Marshall Creek CDD Meeting**

#### **Board Meeting**

**12/17 at 4pm**

At the Amenity Center

### **Sweetwater CDD Meeting**

#### **Board Meeting**

**12/2 at 4pm**

At the Fitness Center

The meetings are open to the public and will be conducted in accordance with the provisions of Florida law for Community Development Districts.

There may be occasions when one or more Supervisors will participate by telephone. The meetings may be continued in progress to a time, date, and location stated on the record without additional publication of notice.

Any person requiring special accommodations at these meetings because of a disability or physical impairment should contact the District Office for your CDD. For Marshall Creek call (954) 603-0033, for Sweetwater call (904) 940-5850, at least 48 hours prior to the meeting. If you are hearing or speech impaired, please contact the Florida Relay Service at 7-1-1 for aid in contacting the District Office.

Each person who decides to appeal any action taken by the Board with respect to any matter considered at these meetings is advised that person will need to ensure that a verbatim record of the proceedings is made, including the testimony and evidence upon which such appeal is to be based.